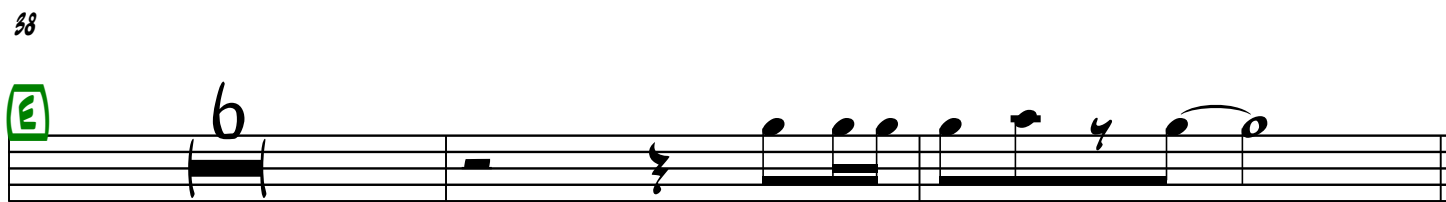
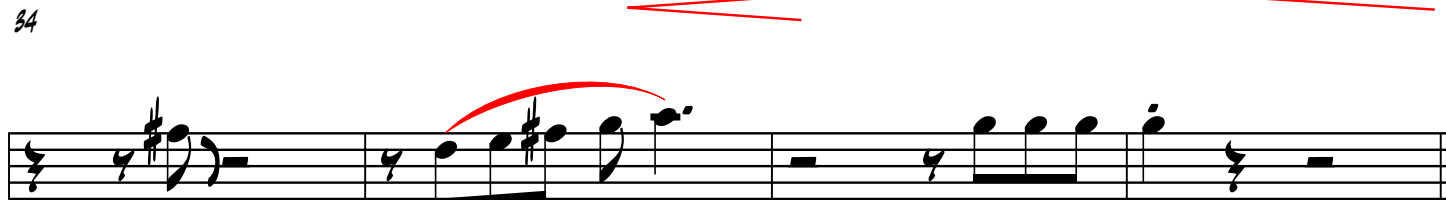
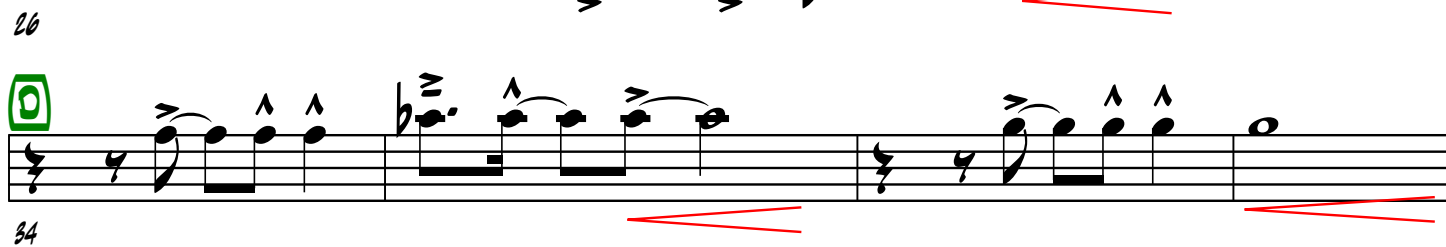
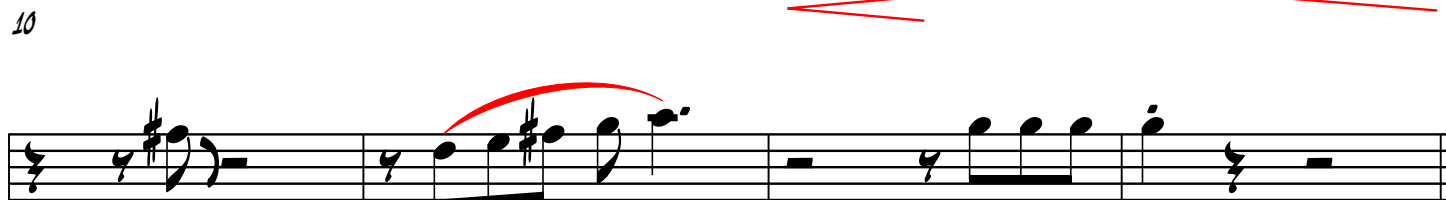
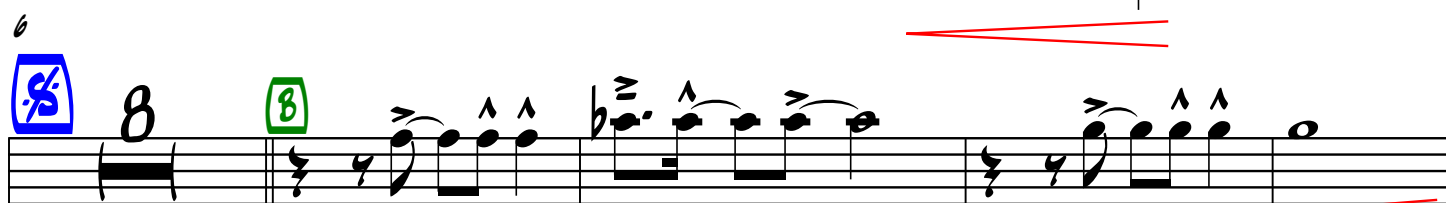


# TODO ME GUSTA DE TI

TRUMPET IN B♭ 1



TODO ME GUSTA DE TI

F

Musical staff for measure 50, starting with a treble clef and a common time signature. The staff contains a whole rest, followed by a half rest, and then a quarter note G4, a quarter note A4, a quarter note B4, and a quarter note C5. A blue circle with a crosshair is at the end of the staff.

50

Musical staff for measure 54, containing a whole rest with a '6' above it, followed by a double bar line, and then another whole rest with a '2' above it.

54

G MAMBO SAXES

Musical staff for measure 62, starting with a bass clef and a common time signature. It contains a whole rest with a '4' above it, followed by a double bar line and a repeat sign.

62 X4 BRASS Y SAXES

Musical staff for measure 66, starting with a bass clef and a common time signature. It contains a quarter note G2, a quarter note A2, a quarter note B2, and a quarter note C3. A red slur is over the first four notes. A blue box contains '1, 2, 3.' above the staff. The staff continues with a quarter note D3, a quarter note E3, a quarter note F3, and a quarter note G3. A blue box contains '4. (TOSEΦ)' above the staff. The staff ends with a double bar line and a repeat sign.

66

Musical staff for measure 71, starting with a bass clef and a common time signature. It contains a whole rest with a '3' above it, followed by a double bar line and a quarter note G2, a quarter note A2, a quarter note B2, and a quarter note C3.

71

Musical staff for measure 75, starting with a bass clef and a common time signature. It contains a quarter note G2, a quarter note A2, a quarter note B2, and a quarter note C3. A red double-headed arrow is below the staff.

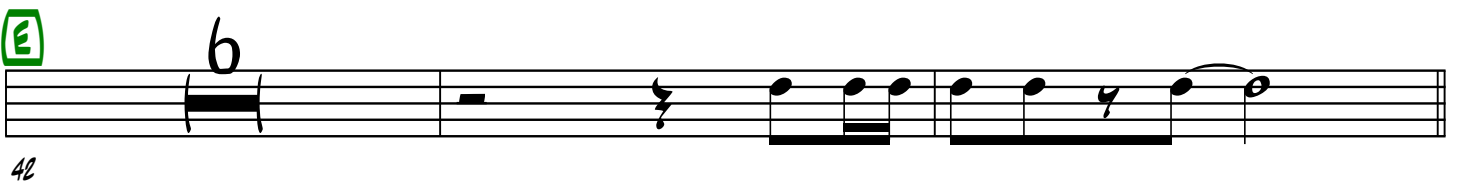
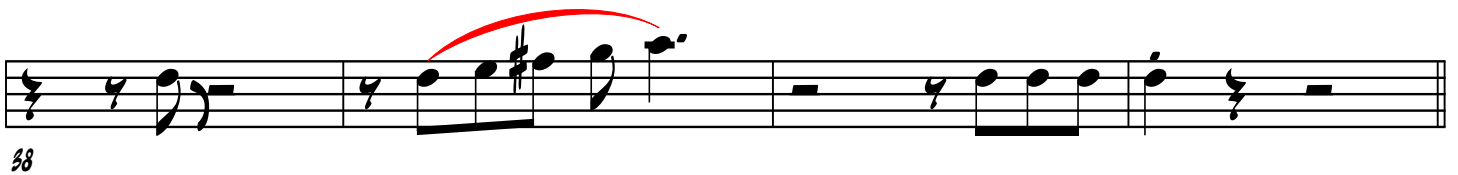
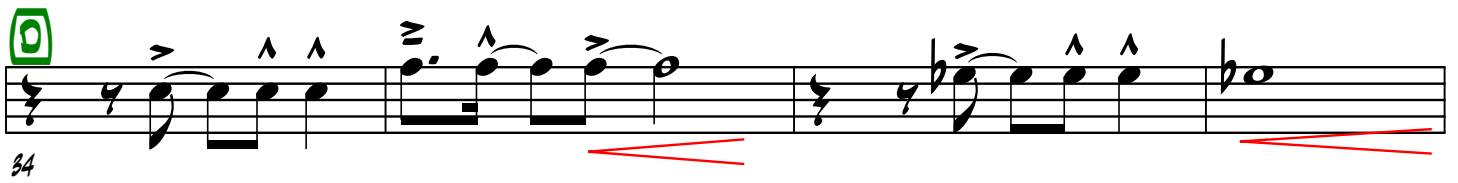
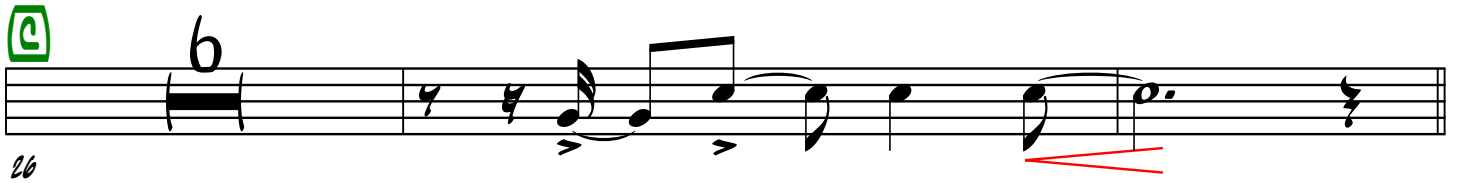
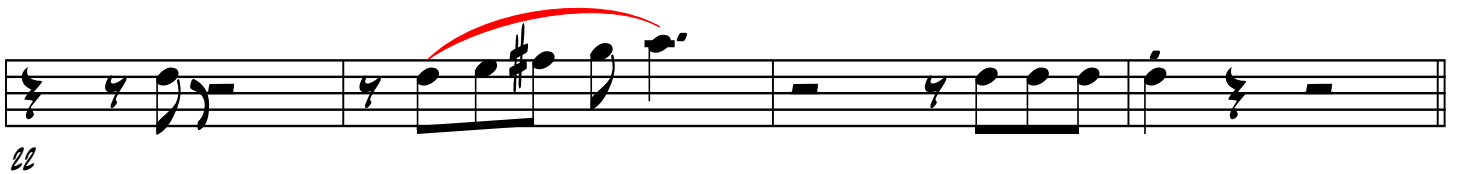
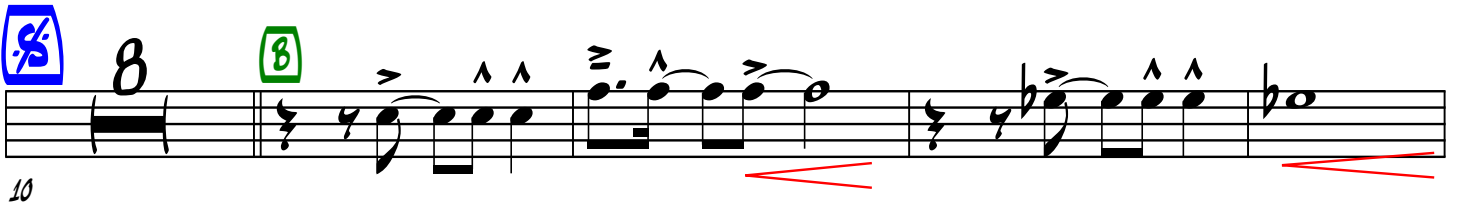
75

Musical staff for measure 81, starting with a bass clef and a common time signature. It contains a quarter note G2, a quarter note A2, a quarter note B2, and a quarter note C3. A red double-headed arrow is below the staff.

81

# TODO ME GUSTA DE TI

2DA TROMPETA



**F**

50

54

**G** MAMBO SAXES

62

X4 BRASS Y SAXES

**H**

66

**I**

71

75

81

# TODO ME GUSTA DE TI

3ERA TROMPETA

Musical score for 3rd Trumpet part of 'Todo Me Gusta de Ti'. The score is written in treble clef with a key signature of one flat (Bb) and a 7/8 time signature. It consists of seven staves of music. The first staff begins with a treble clef, a key signature of one flat, and a 7/8 time signature. The second staff contains a blue square box with a white '8' and a green square box with a white '8'. The third staff contains a blue square box with a white '8'. The fourth staff contains a green square box with a white '6'. The fifth staff contains a green square box with a white '6'. The sixth staff contains a green square box with a white '6'. The seventh staff contains a green square box with a white '6'. The score includes various musical notations such as eighth notes, quarter notes, and half notes, along with dynamic markings like accents (>) and slurs. Red lines are drawn under certain notes in the second, third, fourth, fifth, and sixth staves.

Musical staff for Trompe III, measures 50-53. The staff shows a melodic line starting with a whole rest in measure 50, followed by a half note G4, a quarter note F4, a quarter note E4, and a quarter note D4 in measure 51. Measure 52 contains a quarter note C4, a quarter note B3, and a quarter note A3. Measure 53 contains a quarter note G3, a quarter note F3, and a quarter note E3.

Musical staff for Trompe III, measures 54-55. Measure 54 contains a whole rest. Measure 55 contains a whole rest.

MAMBO SAXES

Musical staff for MAMBO SAXES, measure 62. The staff contains a whole rest.

X4 BRASS Y SAXES

Musical staff for X4 BRASS Y SAXES, measures 66-70. Measure 66 contains a quarter note G4, a quarter note F4, a quarter note E4, and a quarter note D4. Measure 67 contains a quarter note C4, a quarter note B3, a quarter note A3, and a quarter note G3. Measure 68 contains a quarter note F3, a quarter note E3, a quarter note D3, and a quarter note C3. Measure 69 contains a quarter note B2, a quarter note A2, a quarter note G2, and a quarter note F2. Measure 70 contains a quarter note E2, a quarter note D2, a quarter note C2, and a quarter note B1. A blue box highlights measures 69-70 with the text "1. 2. 3." and "4. (TOSQUE)".

Musical staff for X4 BRASS Y SAXES, measures 71-74. Measure 71 contains a whole rest. Measure 72 contains a whole rest. Measure 73 contains a whole rest. Measure 74 contains a whole rest.

Musical staff for X4 BRASS Y SAXES, measures 75-78. Measure 75 contains a quarter note G4, a quarter note F4, a quarter note E4, and a quarter note D4. Measure 76 contains a quarter note C4, a quarter note B3, a quarter note A3, and a quarter note G3. Measure 77 contains a quarter note F3, a quarter note E3, a quarter note D3, and a quarter note C3. Measure 78 contains a quarter note B2, a quarter note A2, a quarter note G2, and a quarter note F2.

Musical staff for X4 BRASS Y SAXES, measures 81-84. Measure 81 contains a quarter note G4, a quarter note F4, a quarter note E4, and a quarter note D4. Measure 82 contains a quarter note C4, a quarter note B3, a quarter note A3, and a quarter note G3. Measure 83 contains a quarter note F3, a quarter note E3, a quarter note D3, and a quarter note C3. Measure 84 contains a quarter note B2, a quarter note A2, a quarter note G2, and a quarter note F2.

1ER SAX

# TODO ME GUSTA DE TI



5



8



10



18



26



30



34

Musical staff starting at measure 38. It contains a melodic line with eighth and quarter notes. A red slur is placed over the notes in measures 39 and 40.

Musical staff starting at measure 42. It shows a whole rest for 8 measures, with the number '8' written above the staff.

Musical staff starting at measure 44. It contains a melodic line with eighth and quarter notes. A blue key signature change symbol (one sharp) is at the end of the staff.

Musical staff starting at measure 48. It contains a melodic line with quarter and eighth notes.

Musical staff starting at measure 54. It contains a complex rhythmic pattern with many sixteenth notes. A blue key signature change symbol (one sharp) is at the end of the staff.

Musical staff starting at measure 62. It contains a complex rhythmic pattern with many sixteenth notes. A blue key signature change symbol (one sharp) is at the end of the staff.

X4 BRASS Y SAXES

1. 2. 3.

4.

(TOSÉ)

Musical staff starting at measure 66. It contains a melodic line with quarter and eighth notes. A blue key signature change symbol (one sharp) is at the beginning of the staff.

Musical staff starting at measure 71. It contains a melodic line with quarter and eighth notes.

Musical staff starting at measure 77. It contains a melodic line with quarter and eighth notes, ending with a double bar line.



TENOR

# TODO ME GUSTA DE TI



5



8



10

8



18

8

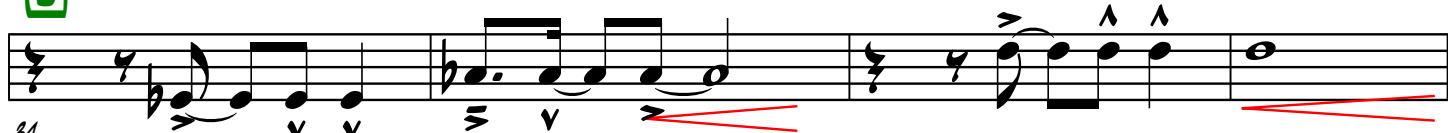


26



29

8



34



38

**E**

42

**F**

50

54

**G**

62

**H** X4 BRASS Y SAXES

66

1. 2. 3. 4.

(TOSÉΦ)

71

77

81

1ER TROMBON

# TODO ME GUSTA DE TI

4

10

18

22

26

34

38

2

TODO ME GUSTA DE TI

**E**

42

**F**

50

**G** MAMBO SAXES

54 X4 BRASS Y SAXES

**H**

1. 2. 3. 4. (TOSEΦ)

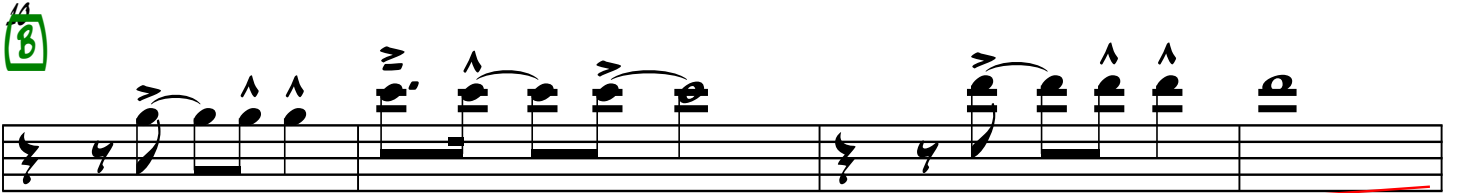
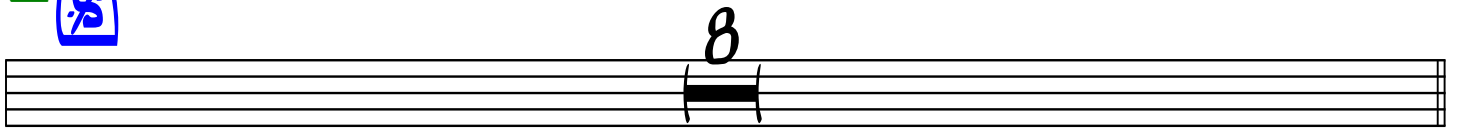
66

71

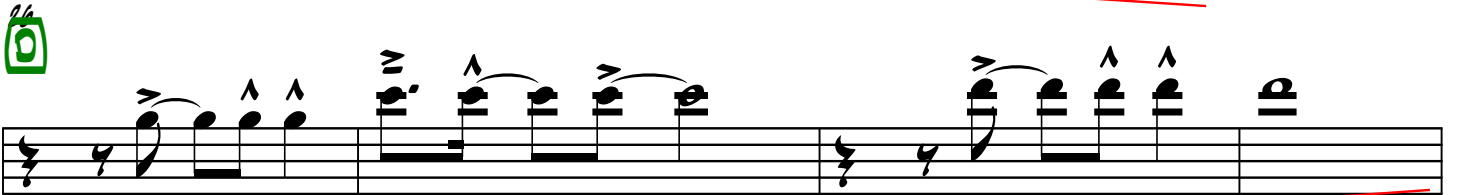
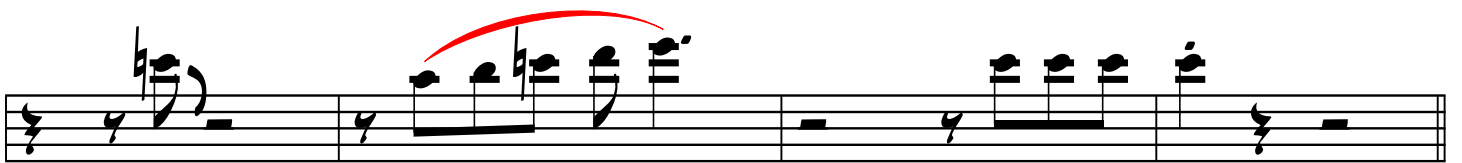
75

83

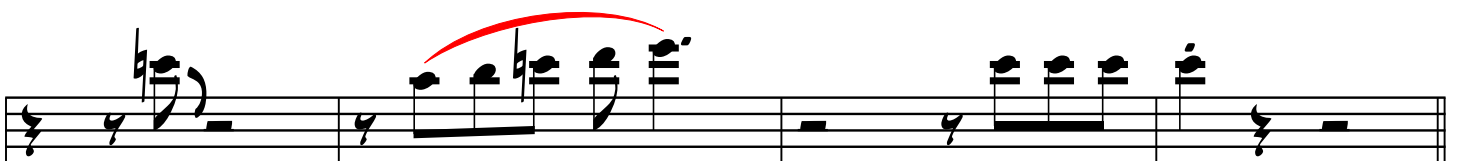
# TODO ME GUSTA DE TI



18



34



38

TODO ME GUSTA DE TI

E

Musical staff with notes and a green '4' annotation above the first measure.

F

Musical staff with notes and a blue circled cross symbol at the end.

50

G

MAMBO SAXES

Musical staff with notes, a green '4' annotation, and blue brackets.

X4 BRASS Y SAXES

H

Musical staff with notes, blue brackets, and first/second endings marked '1. 2. 3.' and '4. (TOXEQ)'.

66

Musical staff with notes and a blue circled cross symbol at the beginning.

71

Musical staff with notes and a red double-headed arrow below the staff.

75

Musical staff with notes and accents (^) above several notes.

83

PIANO

# TODO ME GUSTA DE TI

Chords:  $E\flat_6$ ,  $G_7$ ,  $C_{\text{MIN}7}$

Chords:  $E\flat_{\text{MIN}7}$ ,  $B\flat$ ,  $G_7$ ,  $C_{\text{MIN}7}$ ,  $F_7$ ,  $B\flat_6$ ,  $B\flat_{\text{MA}7}$ ,  $B\flat$

5

Chords:  $C-7$ ,  $F_7$ ,  $C-7$ ,  $F_7$ ,  $B\flat_6$ ,  $B\flat_{\text{MA}7}$

10

Chords:  $B\flat_6$ ,  $B\flat_{\text{MA}7}$ ,  $C-7$ ,  $F_7$ ,  $C-7$ ,  $F_7$ ,  $B\flat_6$ ,  $B\flat_{\text{MA}7}$ ,  $B\flat_6$

13

Chords:  $E\flat_{\text{MIN}7}$ ,  $A\flat_7$ ,  $D\flat_{\text{MA}7}$

18

Chords:  $D\flat_{\text{MA}7}$ ,  $C_7$ ,  $C_7$ ,  $F_7$ ,  $F_7$

21

Chords:  $C_{\text{MIN}7}$ ,  $F_7$ ,  $C_{\text{MIN}7}$ ,  $F_7$ ,  $B\flat_6$ ,  $B\flat_{\text{MA}7}$

26

29

*Bb* *BbMA7* *Cmin7* *F7* *Cmin7* *F7* *Bb* *BbMA7* *Bb*

34

*Emin7* *A7* *DbMA7*

37

*DbMA7* *C7* *F7* *F7*

42

*Eb* *F7* *G*

45

*Cmin7* *A7* *Dmin7* *Dmin7*

50

*Emin7* *Bb* *A7*

53

*G7* *Cmin7* *F7* *Dmin7*

57

*G7* *Cmin7* *F7* *Bb* *BbMA7* *Bb*



62

G

F7 F7 Bb6 Bb

66

H

F7 F7 Bb Bb Bb

71

C MIN7 F7 D MIN7 G7 C MIN F7

77

Bb Bb MA7 Bb7 Bb7 Eb MIN7 Ab7

81

Db MA7 Gb MA7 C MIN7 F7

85

F7 Bb Bb MA7 Bb